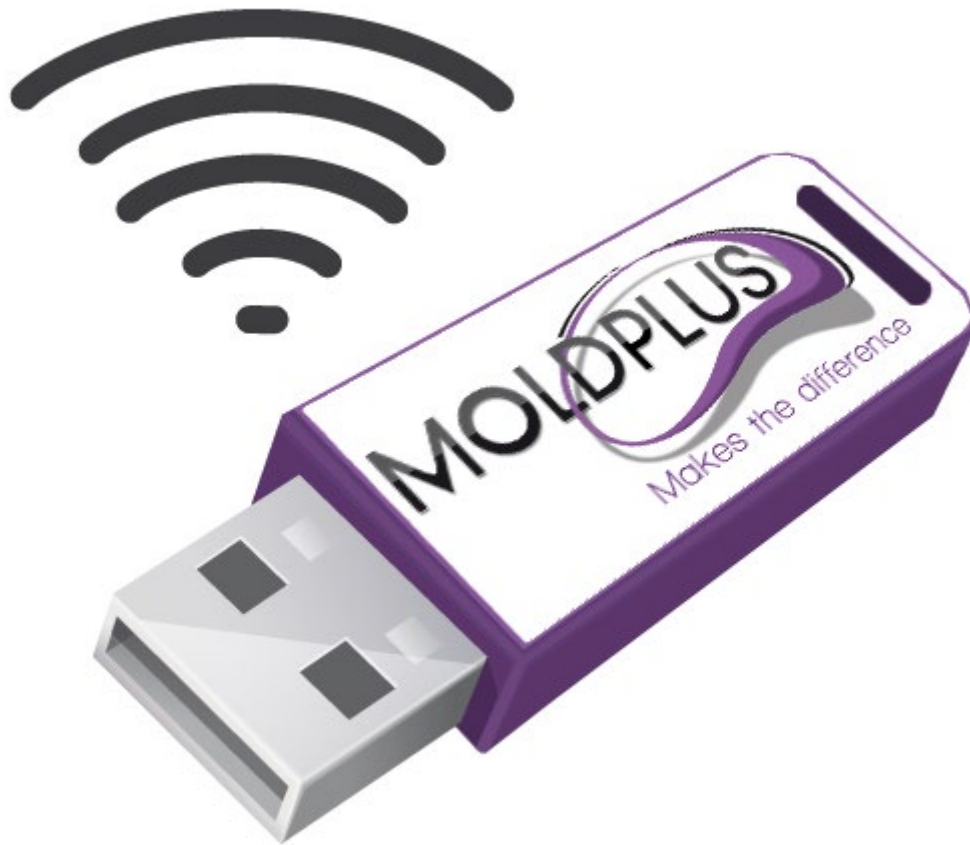


Moldplus Server V6.0



User Guide

Revision date: June 30, 2019

TABLE OF CONTENTS

INTRODUCTION.....	3
PRODUCTS SUPPORTED BY MOLDPLUS SERVER V6.0.....	4
WHAT'S NEW IN VERSION 6.0.	4
NEW SIM DETECTION METHOD.....	4
WIBU NETWORK SERVER SUPPORT	4
STREAMLINED USER INTERFACE.....	5
CUSTOMER REQUIREMENTS:.....	8
INSTALLATION PROCESS.....	10
FOLDER LOCATIONS	14
AFTER INSTALLATION.....	15
MOLDPLUS SERVER CONFIGURATION – NETHASP SIM.....	15
MOLDPLUS SERVER CONFIGURATION – WIBU NETWORK SIM	18
<i>XML License Registration Process:</i>	19
UPDATE XML LICENSE PROCESS	23
UNINSTALLATION	25
CLIENT COMPUTER LICENSE CONFIGURATION	27
NETWORK LICENSE MONITOR.....	29
1.1 MOLDPLUS LICENSE SERVER MANAGER	29
1.2 <i>Moldplus Licenses Operation</i>	33
1.3 <i>Moldplus Temporary Licenses</i>	33
TROUBLE-SHOOTING	33
2.1 NETHASP LICENSE MANAGER NOT INSTALLED	33
2.3.3 <i>Moldplus Server Diagnostic Tool</i>	35
CONCLUSION.....	37

Introduction

This document is designed to assist you with properly installing and configuring Moldplus Server Version 6.0 on your Mastercam Network license management system. The server computer has to be a 64bit operating system.

The installation program for Moldplus Server V6.x is designed to install the required files for Moldplus Server to function along with:

- a. the Aladdin HASP License Manager for Mastercam for NETHASP SIMS
- b. or the WIBU NETWORK software license server.

An assumption is made that you have ALREADY PROPERLY CONFIGURED THE ABOVE license servers for Mastercam and taken the necessary precautions to ensure smooth operation of above systems.

Moldplus Server is designed to work along with the above licensing systems. The Moldplus Server executable enables users to use Moldplus in a network environment. The number of licenses you purchase for Moldplus products limit the number of licenses you can run at any given time. The license information is stored in an XML file that is provided by Moldplus SA and configured with the Server software.

The concept behind using Moldplus products in a network environment is to enable multiple users to use the relevant Moldplus product from different work-stations, using only one software protection module from a station that is called the Moldplus Server.

This **installation should be performed** on the **system** that **has** the **NETHASP SIM physically installed and** the same location where the **HASP License Manager is installed**. For **WIBU NETWORK** servers, the **Moldplus Server** needs to be **installed** on the computer **where the WIBU NETWORK Server is installed and activated/managed**.

To perform the **Moldplus Server V6.x installation** on a **server for the first time with the NETHASP SIM** (even if you uninstall the Moldplus Server V5.4), it is **imperative** that **someone is physically present at the Server** to interact with the SIM as they will be asked to disconnect and connect the NETHASP SIM during the process. Future updates can be done remotely.

Products supported by Moldplus Server V6.0

Moldplus products are supported to run under the Moldplus Server Manager for versions of **Mastercam 2020 and below up to Version 9.1**

WIBU Network licensing is only supported for **Mastercam 2019 and above**.

NOTE: - Moldplus Maintenance dates are independent of the Mastercam maintenance dates. The dates displayed in the Moldplus Server manager will indicate when the Moldplus maintenance will expire.

What's new in Version 6.0.

This is a major update of the Moldplus Server since the release of the last version. Studying the installation process and challenges faced by our reseller network over the years, we have streamlined the process as much as possible to help ease the installation and configuration process.

Some of the main highlights include:

1. Implemented new NETHASP SIM detection mechanism. (NETHASP SIM mode can be configured as NETWORK or LOCAL for Mastercam.)
2. Support for the Mastercam WIBU NETWORK licensing.
3. Firewall exceptions for the Moldplus Service automatically added using the new installation software package during the installation process.
4. Streamlined the User Interface of the Server solution to minimize the interactions for the end-user.
5. Automatically launch the Service and Server upon code registration and installation completion.
6. Automatically select all available IP addresses for the Server if no IP address is chosen.
7. License update process only involves registering a new XML license provided using the **Register license** button from the License Manager dialog. There is no need to stop or start the server to do this.

NEW SIM detection method

Moldplus Server uses a new mechanism to identify the existence of the NETHASP SIM on the computer. The Mastercam SIM setting mode does not affect Moldplus Server 6.0.

WIBU NETWORK Server support

Moldplus Server functions with the WIBU NETWORK server.

Streamlined User Interface

Moldplus Server interface has been improved to display the minimal information to the end user when launched. Prompts in the LOG tab help walk the end user through the installation process. Upon successful license registration, the Server is automatically launched.

	Level Id	Level Name	Date	Type	#Used Seats	#Seats
1	1	Moldplus Standard	Fri Jan 31 2020	M	0	10
2	3	Moldplus Professional	Fri Jan 31 2020	M	0	10
3	5	Moldplus 5 Axis Toolkit	Fri Jan 31 2020	M	0	10
4	6	Moldplus 5 Axis Toolkit Professional	Fri Jan 31 2020	M	0	10
5	7	Moldplus STL Utilities	Fri Jan 31 2020	M	0	10
6	8	Moldplus Plate Fixture Design	Fri Jan 31 2020	M	0	10
7	11	Moldplus CATIA V5 Read	Fri Jan 31 2020	M	0	10

Viewing the Log tab will display the status of the Server.

IP# to use: 192.168.1.33

Port: 897

Register license: M-ABC_Client_M219-1234_s.xml

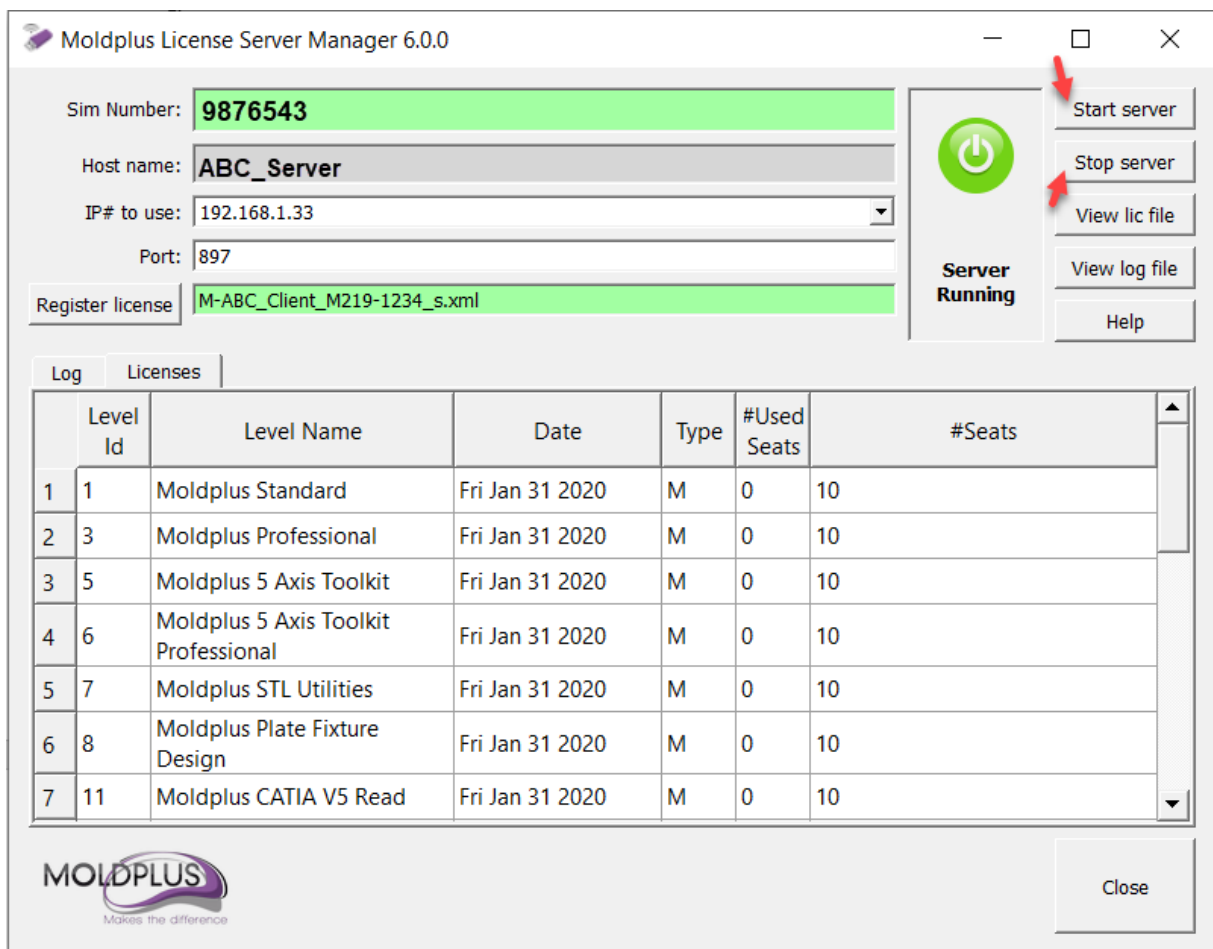
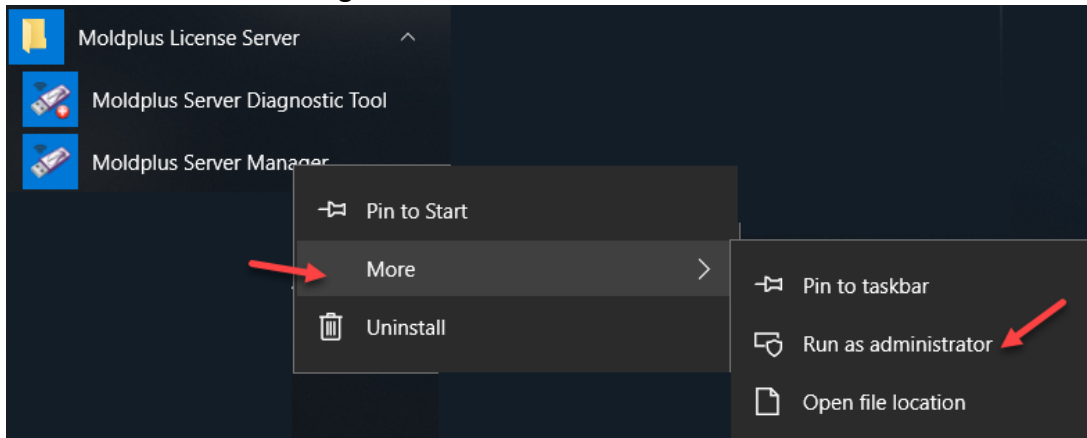
Server Running

Log | Licenses

Server started
Detecting connected SIM...
Local NetHasp found, start monitoring.

T

Additional buttons for Starting and Stopping the Server are only displayed when the Server interface is launched using the Admin mode.



The following is a summary of the bugs fixed and improvements.


Enhancements:

- [MLDSV-86] - Remove the service account setting
- [MLDSV-89] - Support for WIBU Network licensing
- [MLDSV-91] - Switch to Advanced Installer for application packaging
- [MLDSV-101] - Show Start and Stop buttons when Manager is started with Admin rights
- [MLDSV-102] - Automatically restart server on config update
- [MLDSV-85] - Minor UI improvements
- [MLDSV-87] - Restore Manager size and position
- [MLDSV-94] - Improve log messages and responsiveness
- [MLDSV-95] - Include Moldplus logo as the images for the installer
- [MLDSV-97] - Remove start / stop buttons from the manager
- [MLDSV-98] - Automate packaging
- [MLDSV-99] - Choose all IP addresses by default when no IP is selected
- [MLDSV-75] - Improve robustness of key mapping storage
- [MLDSV-79] - Add explicit message when service cannot be started because of user rights
- [MLDSV-80] - Use SimAccess for key validation only and sentinel info for monitoring
- [MLDSV-74] - Implement more robust Local NetHasp detection mechanism

Bugs Fixed

- [MLDSV-83] - Clients cannot connect to the new Moldserv beta
- [MLDSV-84] - Moldserv is sometime unresponsive
- [MLDSV-82] - Moldserv cannot validated some sentinel key types
- [MLDSV-72] - Moldserv does not detect NetHasp local with latest drivers

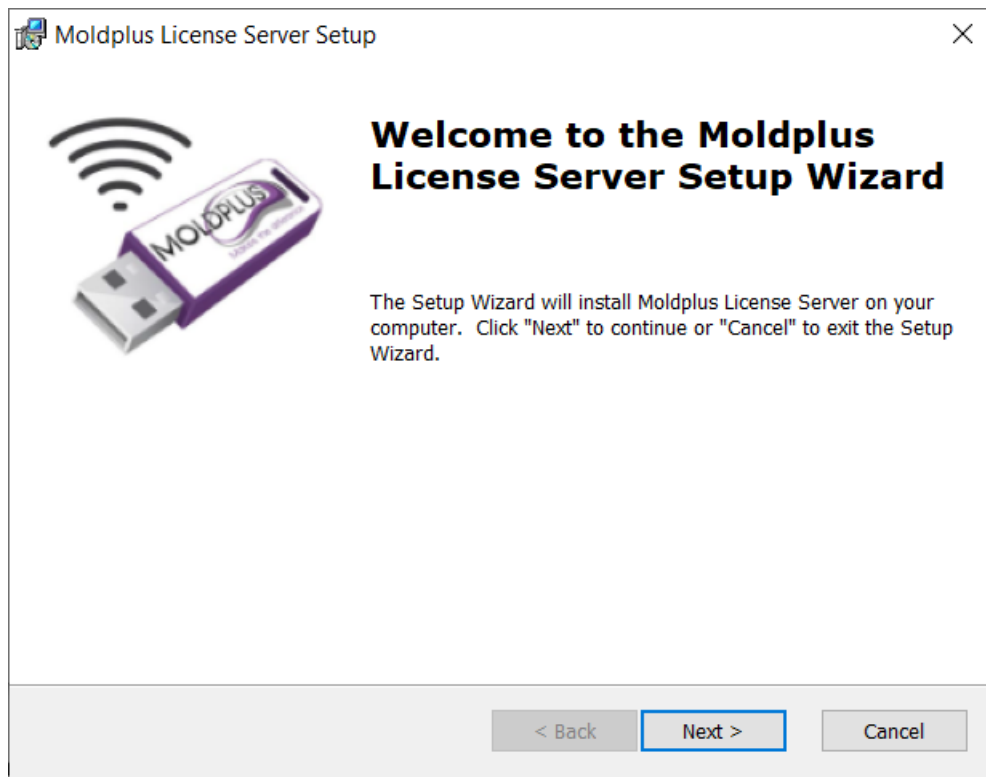
Customer Requirements:

1. The Windows Server Operating System is a **64bit operating system**.
 2. Please make sure you are **logged on as Administrator** or with administrative privileges, before performing the installation.
 3. During the installation process, the installation will check to see if **Visual Studio 2008 SP1 Redistributable package is installed**. If it is not installed, it will launch the dialog to install this package. This installation is included in the Moldplus Server install.
 4. Moldplus Server will NOT FUNCTION WITH a regular HASP SIM!
 5. Have the Moldplus products XML license file available to configure upon completion of Moldplus Server installation. Your reseller should have provided you the XML license file that is related to your NETHASP SIM.
- a. Configuring for a WIBU NETWORK**
6. The **Moldplus Server 6.0 is installed** on a **dedicated computer** as the **Server**. Moldplus Server will not check out a license for a client using the WIBU Server as a local computer! **The Moldplus product licenses can only be checked out on computers where the license is identified as a WIBU NETWORK.**
- b. Configuring with a NETHASP SIM**
7. Ensure that someone is physical present at the Server computer for installing the Moldplus Server V6.x software for the very first time. The SIM identification process requires someone to disconnect and connect the SIM when prompted!
 8. If you haven't installed the Aladdin Hasp License Manager software, please **perform the installation**. (Installation software LMSETUP.EXE also provided with the Moldplus Server 5.4 installation from the *\Program Files\Aladdin\HASP LM\Additional Files* folder). To verify that the Nethasp License Manager is installed and running on your system, you will notice an icon on the bottom right  for NetHasp License Manager 8.32
 9. Ensure that the latest **HASP driver is installed** on the Server system. **These are the Sentinel drivers V6.6. Please do not install a version greater than this version.** This is automatically done when the Hasp License Manager is installed OR if the Mastercam software installation is performed. The installer can be found in the *\Program Files\Mcam2019\Common* folder.

10. The Sentinel drivers V6.6 require the **port 1947 to be free for UDP and TCP**. Please ensure that you ADD THESE PORT EXCEPTIONS MANUALLY to the system FIREWALL for incoming and outgoing transmissions.
11. The Hasp License Manager should be installed as a Windows Service. You will be prompted by the Hasp License Manager installation if you wish to install as a Service or Application. Choose to install as a Service.
12. The maximum number of simultaneous users allowed with Moldplus License Manager is limited to 100.
13. If all the above precautions have been taken, the installation process and configuration should be smooth.

Installation Process

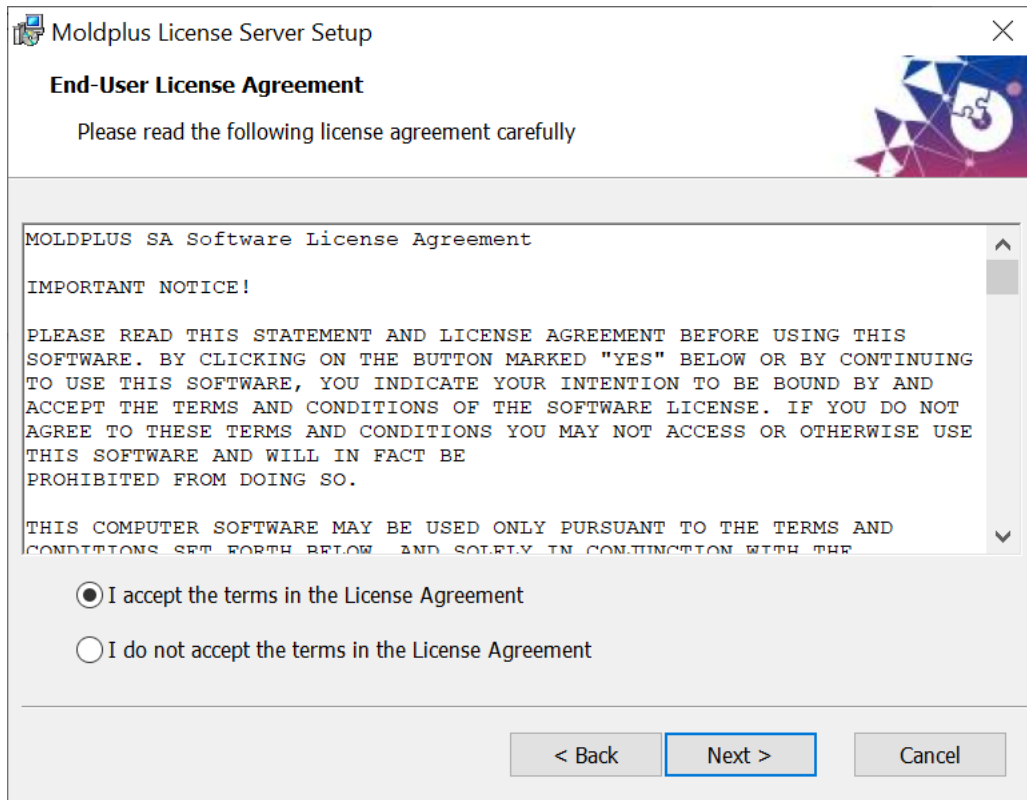
The Moldplus Server installation runs as follows:



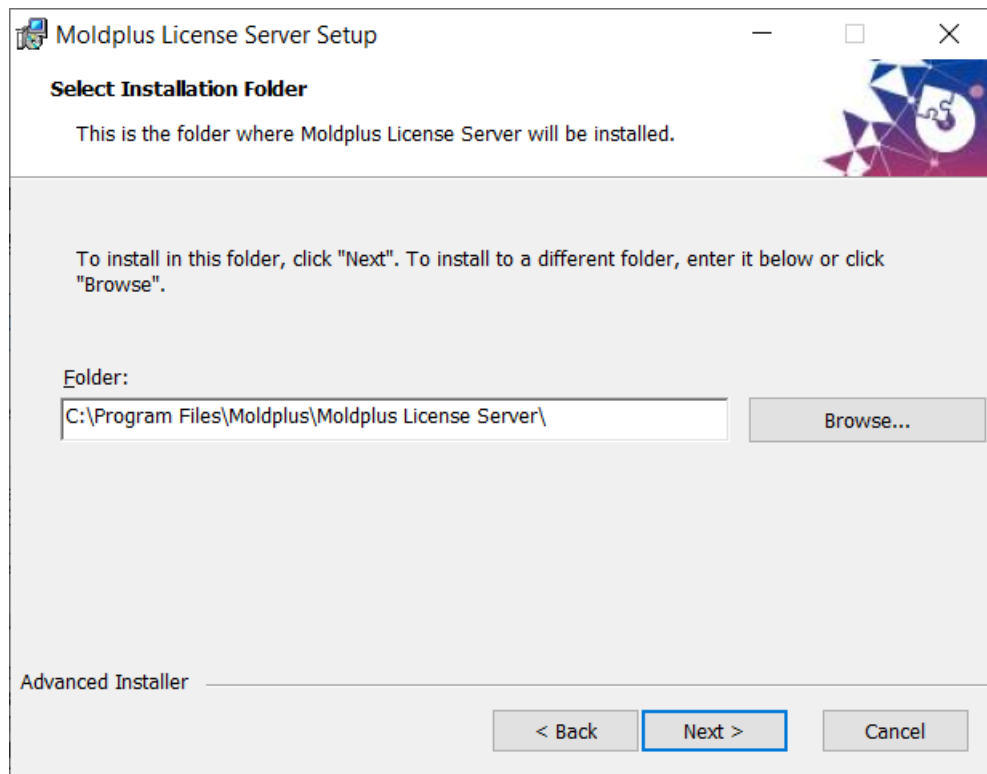
1. Launches the installation and presents the welcome screen as shown above.
2. Performs a check to see if you running with administrative privileges before proceeding.

The install also checks to see if you have administrative rights. If you do not, the installation aborts!

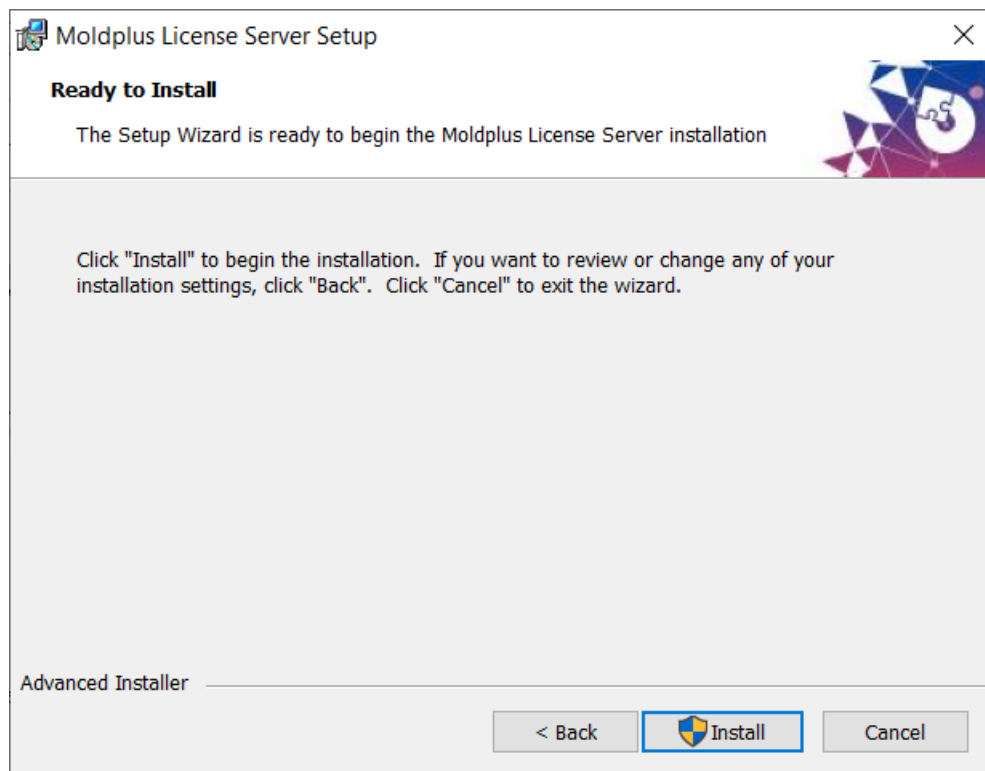
3. Displays the Moldplus License Agreement. Click on **Yes**, after reading the License agreement to continue.



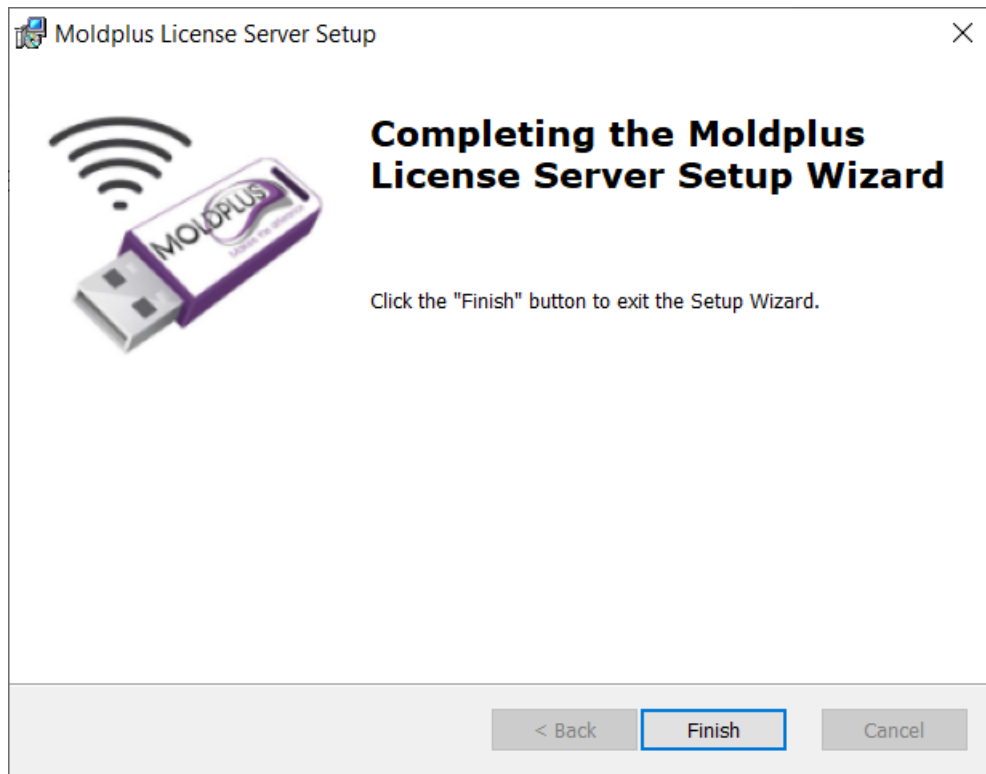
4. If the Hasp License Manager installation was found, the directory automatically defaults to **\Program Files (x86)\Aladdin\HASP LM** folder. A new sub-folder **\Moldplus Server** will be created under the **\HASP LM** folder to install the Moldplus Server program files. Another folder called **\Additional Files** will also be created under the **\HASP LM** folder to install other relevant files. The following dialog will be presented at this stage.



5. The files are copied to the respective folders.

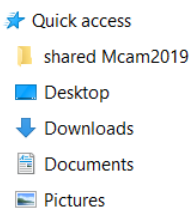


Once the files are copied successfully, you will get an install complete successfully message.



Folder Locations

The **Moldplus Server product** is installed to the following location:

C:\Program Files\Moldplus\Moldplus License Server				
	Name	Date modified	Type	Size
	imageformats	3/24/2019 3:04 PM	File folder	
	platforms	3/24/2019 3:04 PM	File folder	
	ThirdPartySoftware	3/24/2019 3:04 PM	File folder	
	moldservd.dll	3/13/2019 4:12 PM	Application extens...	896 KB
	MoldservDiagTool.exe	3/13/2019 4:13 PM	Application	205 KB
	MoldservManager.exe	3/13/2019 4:13 PM	Application	371 KB
	MoldservService.exe	3/13/2019 4:14 PM	Application	224 KB
	Qt5Core.dll	2/9/2018 7:02 PM	Application extens...	5,716 KB
	Qt5Gui.dll	2/9/2018 7:02 PM	Application extens...	6,128 KB
	Qt5Network.dll	2/9/2018 7:02 PM	Application extens...	1,202 KB
	Qt5Svg.dll	2/9/2018 7:02 PM	Application extens...	321 KB
	Qt5Widgets.dll	2/9/2018 7:02 PM	Application extens...	5,340 KB

The **Additional Files** is installed to the following location:

C:\Program Files\Moldplus\Moldplus License Server\ThirdPartySoftware				
	Name	Date modified	Type	Size
	HASPUSetup.exe	3/13/2019 4:14 PM	Application	19,354 KB
	Imsetup.exe	3/13/2019 4:14 PM	Application	16,357 KB

After launching the Moldplus Server and registering the license, the files are stored to the following location:


C:\Users\Public\Documents\Moldplus\Moldserv				
	Name	Date modified	Type	Size
	licensesBackup	3/10/2019 4:34 PM	File folder	
	M-ABC_Client_M219-1234_s.xml	3/10/2019 3:48 PM	XML Document	13 KB
	ManagerLog.txt	3/24/2019 3:02 PM	Text Document	4 KB
	moldserv.ini	3/24/2019 3:01 PM	Configuration setti...	1 KB

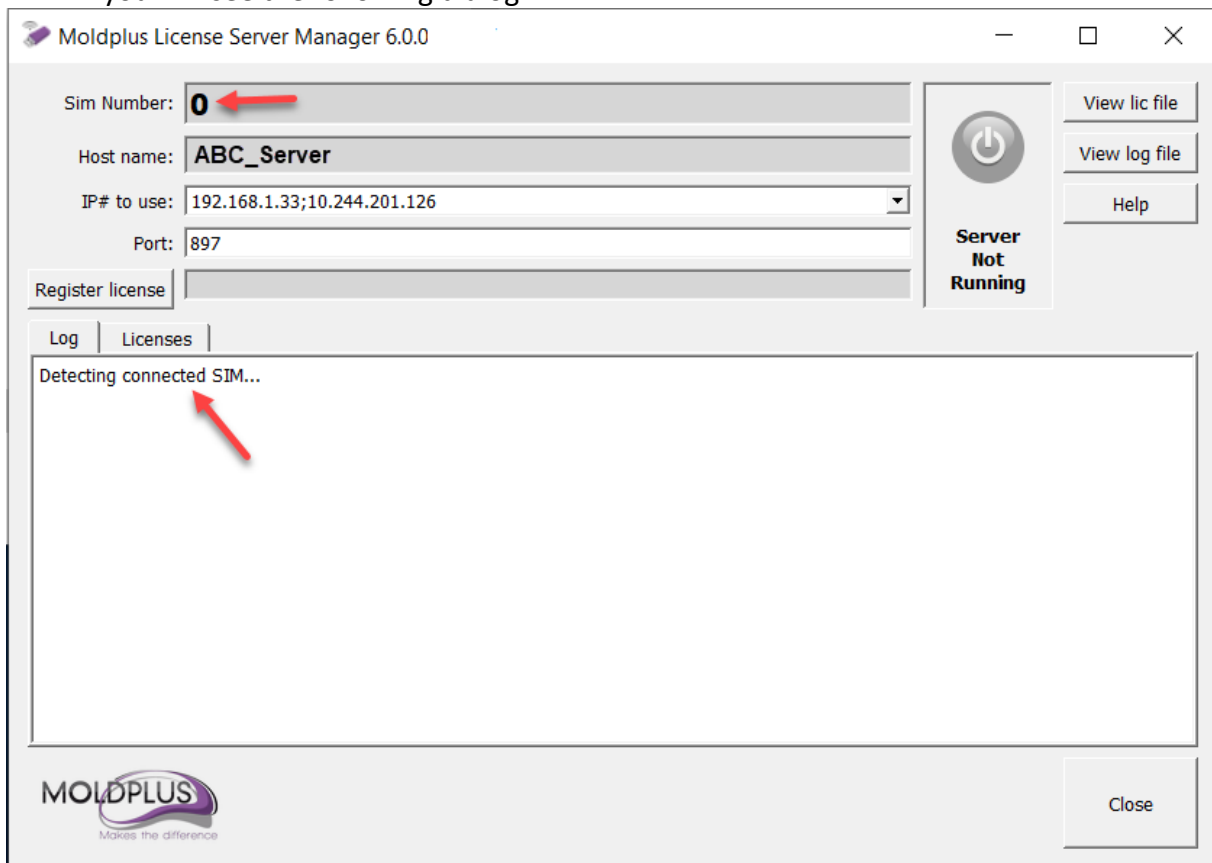
After installation

Once the installation is completed successfully, you can perform the following operations to ensure that Moldplus Server 6.0 is up and running.

You can continue with the following steps when the Moldplus Server successfully launches after these steps.

Moldplus Server Configuration – NETHASP SIM

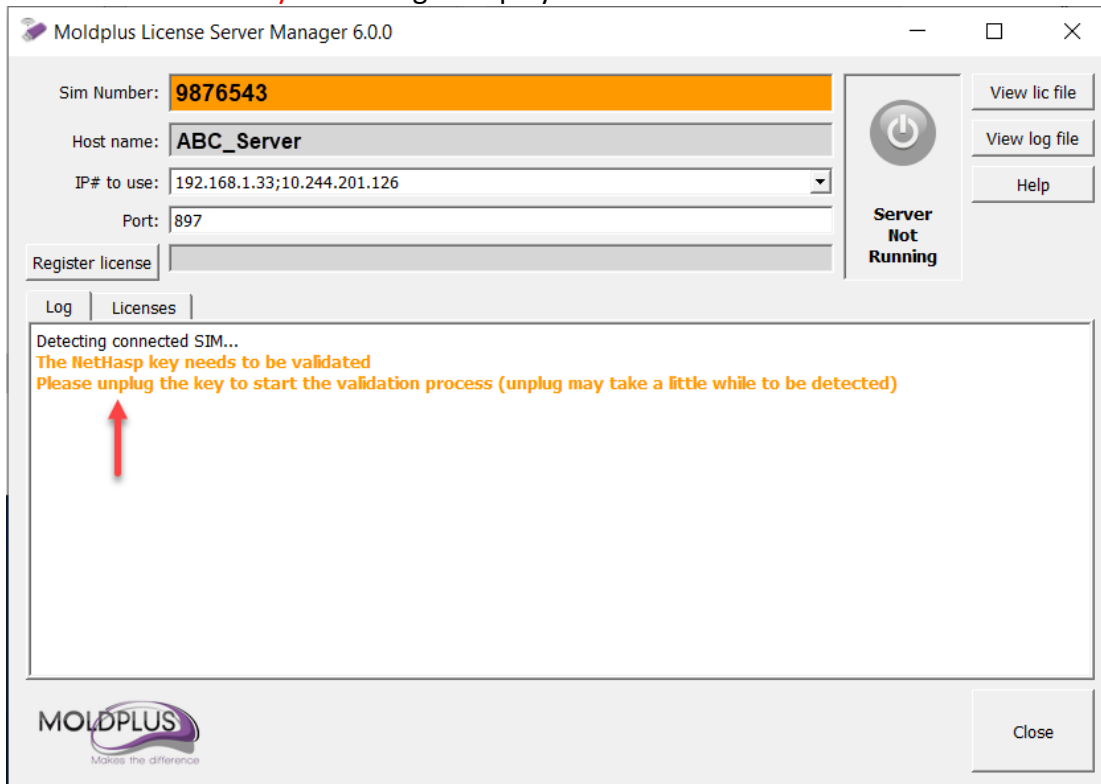
1. Launch the Moldplus Server Manager  from the Program Groups “Moldplus License Server”. If this is a configuration for the first time, you will see the following dialog.



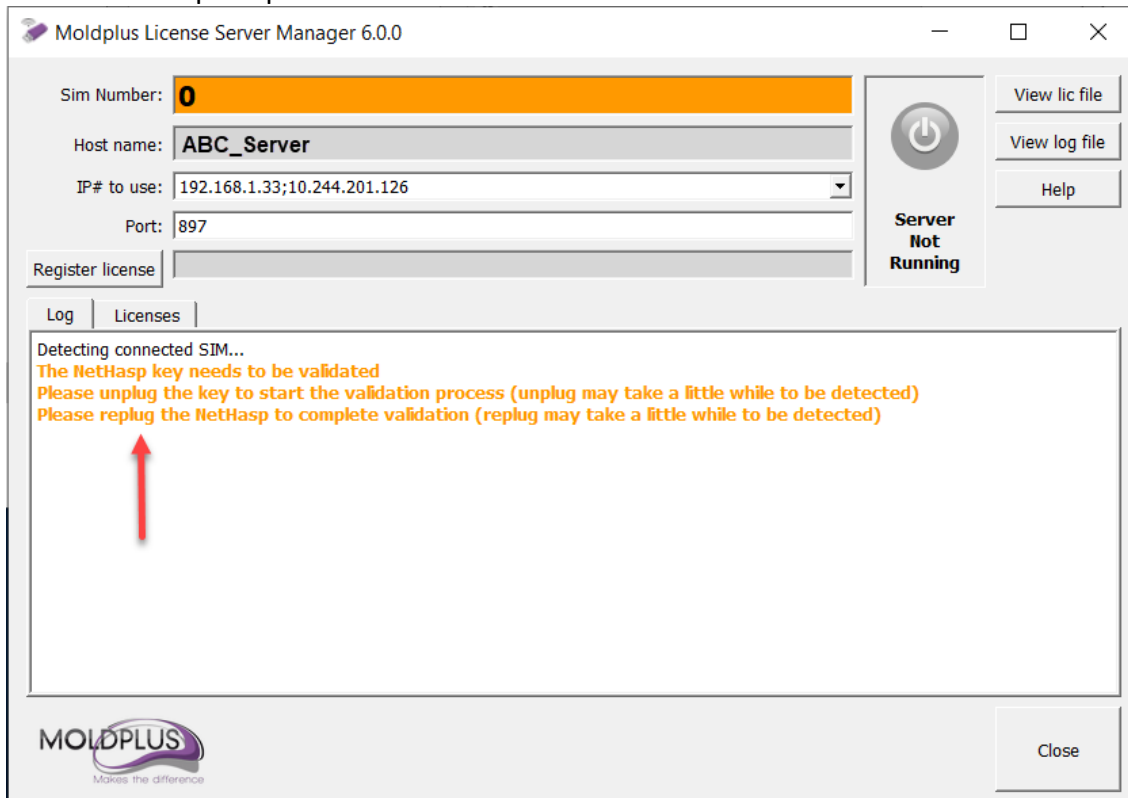
This process may take a little time. Do NOT DO ANYTHING till the NEXT PROMPT in the log file.

Whatever IP addresses exist on the server are chosen automatically in the IP# to use section.

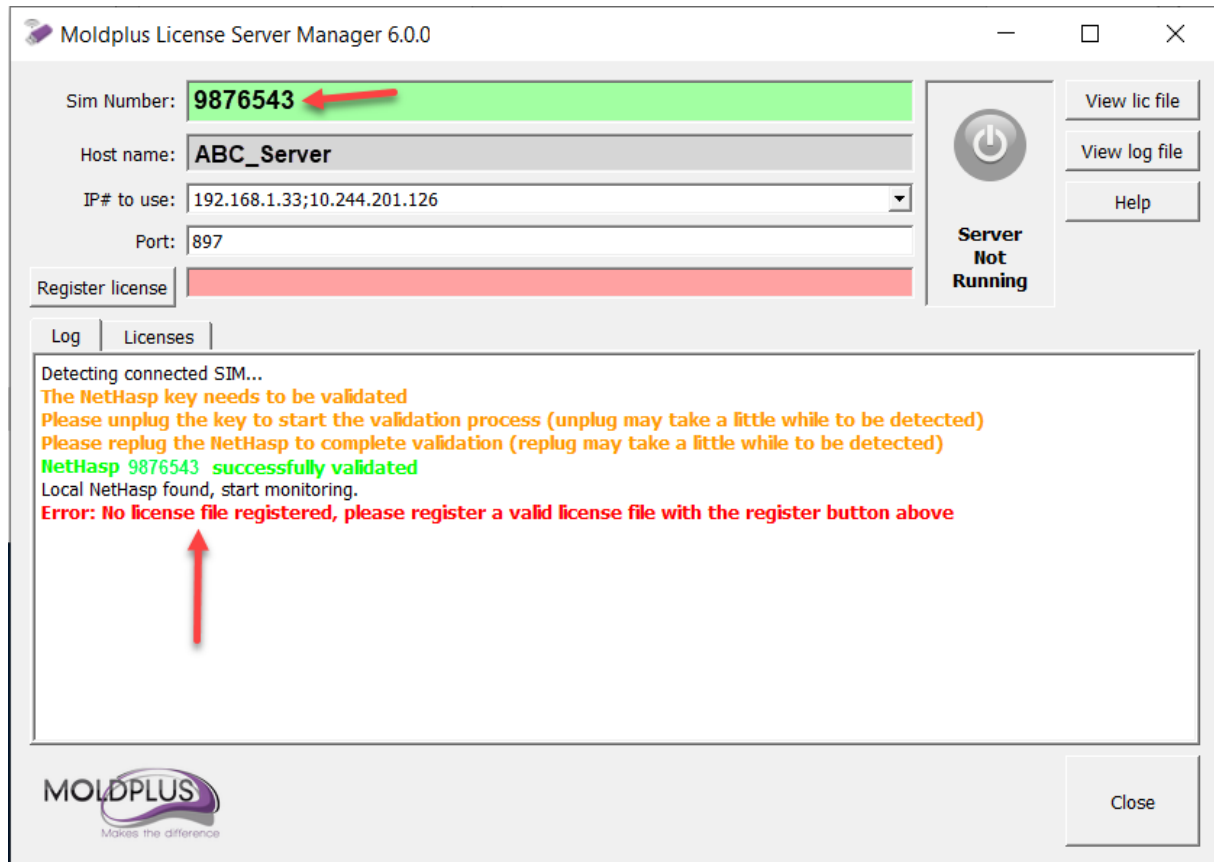
- When the NETHASP SIM is identified, the following prompt to disconnect the NETHASP SIM is mentioned in the Log section. Sometimes the SIM number might not be identified yet and might display a 0 value. It is OK.




- Disconnect the NETHASP SIM from the Server computer. DO NOT RECONNECT IT TILL PROMPTED! The SIM number will display a value of 0. This is correct. Please wait! You will be prompted as shown below to reconnect the NETHASP SIM.

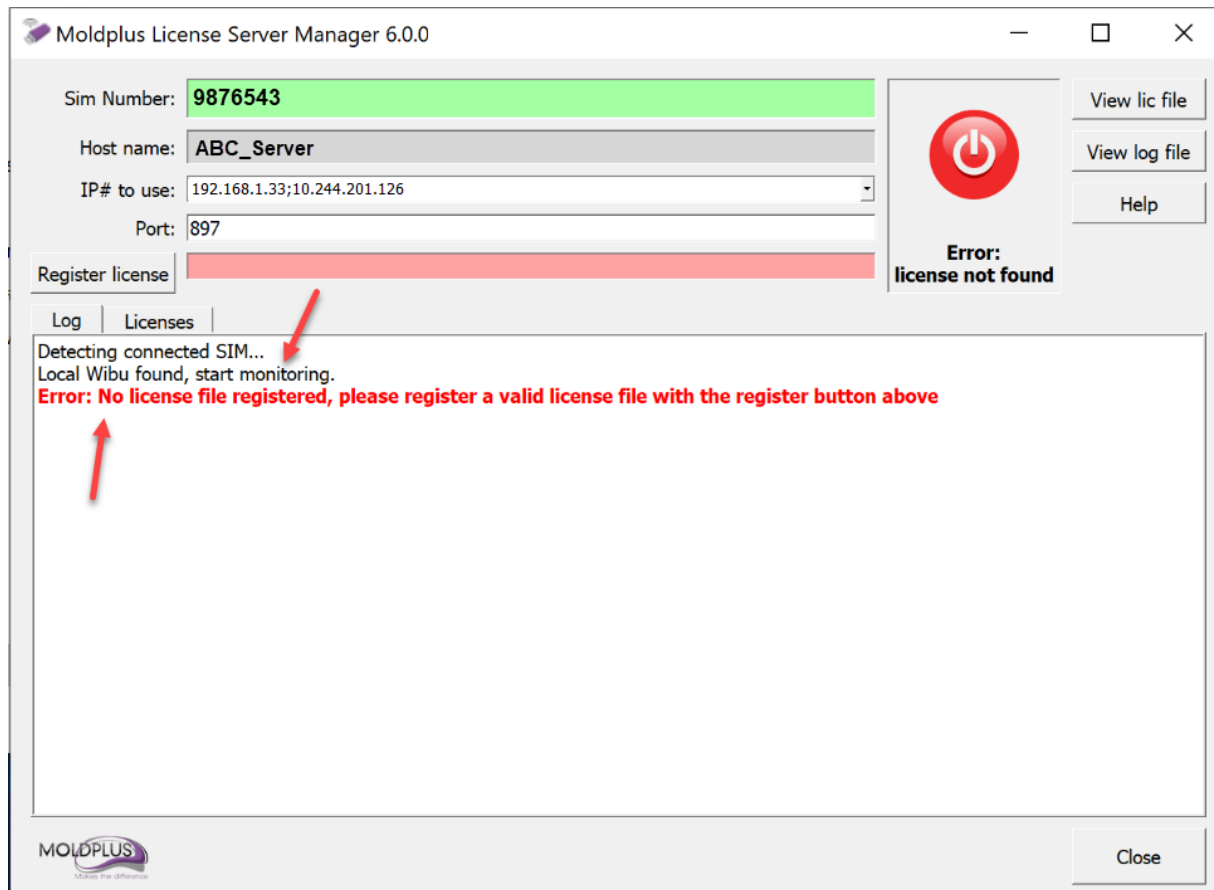


4. When you reconnect the NETHASP SIM again, the SIM is now identified and displayed as shown:

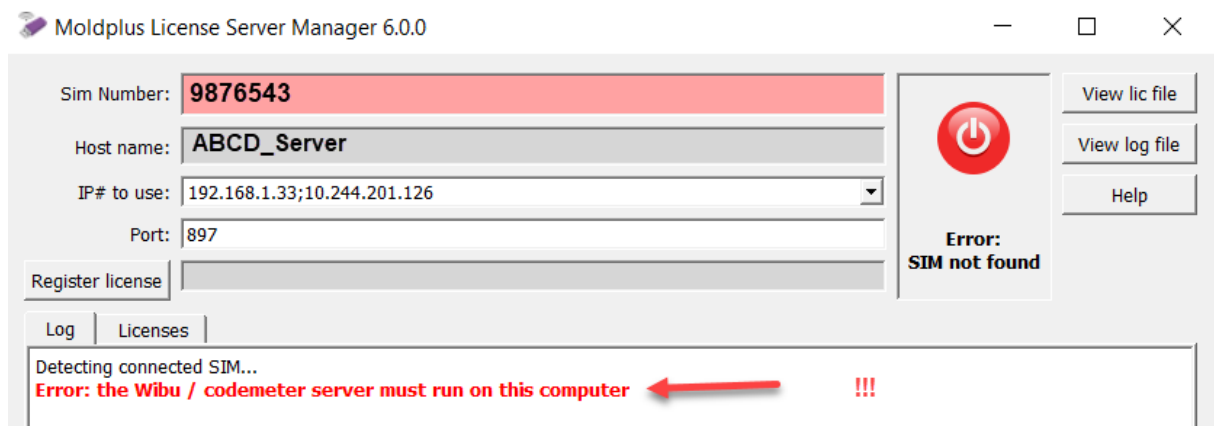


Moldplus Server Configuration – WIBU NETWORK SIM

5. Launch the Moldplus Server Manager  from the Program Groups “Moldplus License Server”. If the WIBU SIM is identified, it is immediately displayed here.



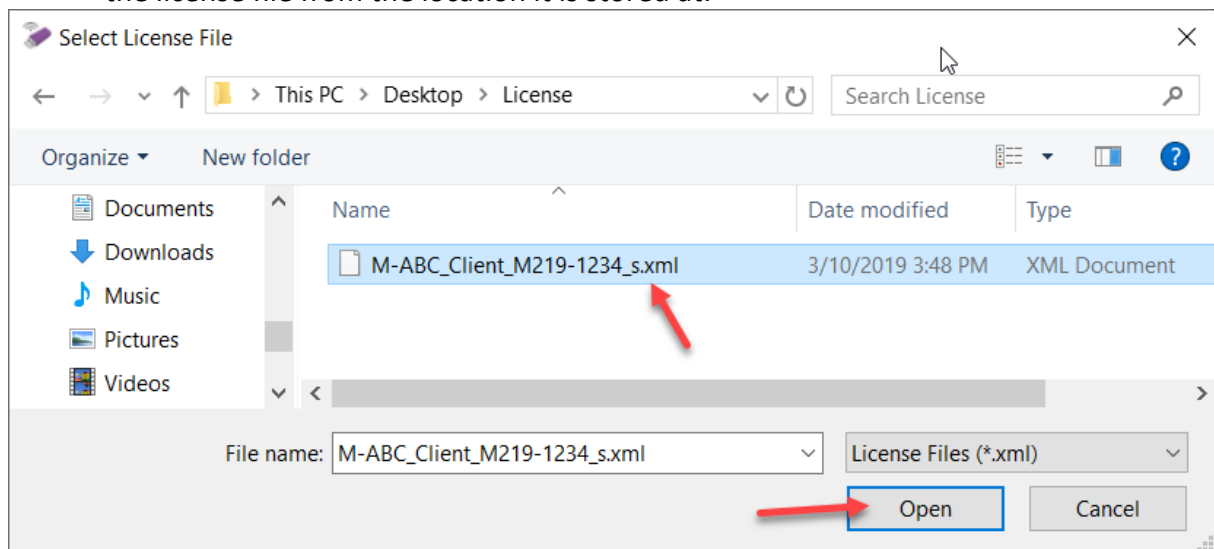
WARNING: The Moldplus Server will only function on a local WIBU Server. If you attempt to configure the Moldplus Server and the Local WIBU Server is NOT identified, you will not be able to configure the Server.



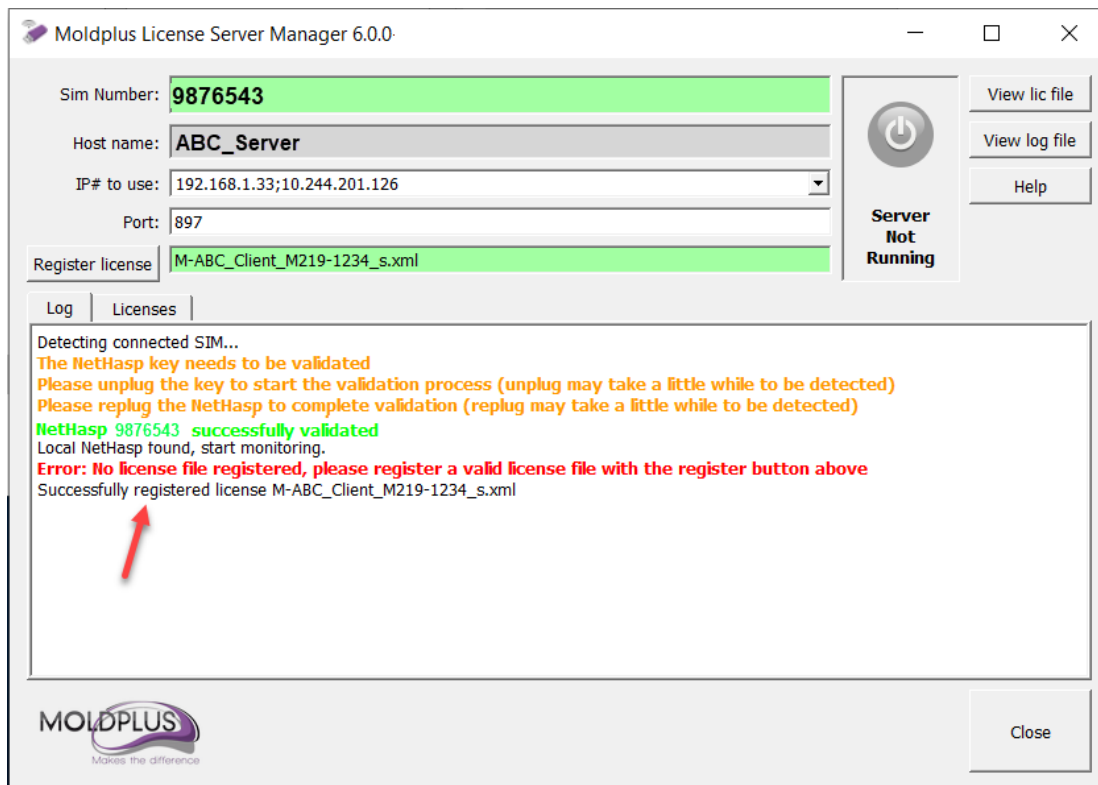
You are now ready to register the XML license.

XML License Registration Process:

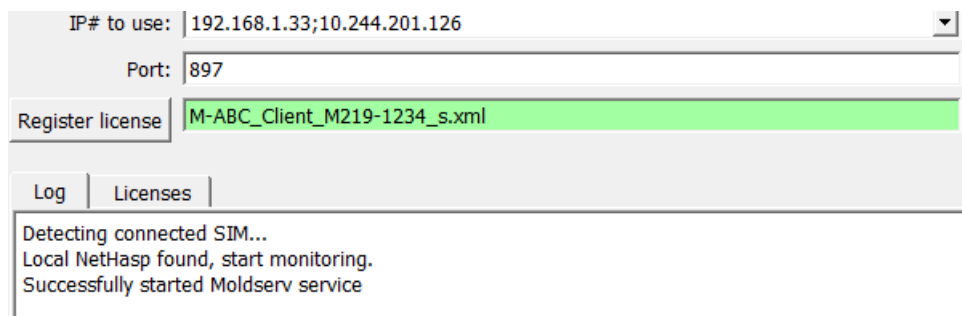
6. To register the provided XML license file, **click** on the **Register license** button to select the license file from the location it is stored at.



The result of doing this with the XML license will be as follows. The license is successfully registered.



7. The License Server is automatically launched.



8. The following is the result when the License Server is running.

Moldplus License Server Manager 6.0.0

Sim Number: **9876543**

Host name: **ABC_Server**

IP# to use: **192.168.1.33**

Port: **897**

Register license: **M-ABC_Client_M219-1234_s.xml**

Server Running

View lic file

View log file

Help

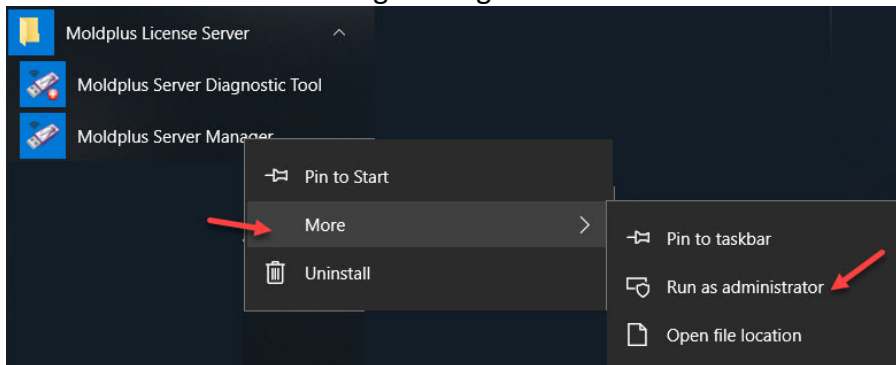
Log Licenses

	Level Id	Level Name	Date	Type	#Used Seats	#Seats
1	1	Moldplus Standard	Fri Jan 31 2020	M	0	10
2	3	Moldplus Professional	Fri Jan 31 2020	M	0	10
3	5	Moldplus 5 Axis Toolkit	Fri Jan 31 2020	M	0	10
4	6	Moldplus 5 Axis Toolkit Professional	Fri Jan 31 2020	M	0	10
5	7	Moldplus STL Utilities	Fri Jan 31 2020	M	0	10
6	8	Moldplus Plate Fixture Design	Fri Jan 31 2020	M	0	10
7	11	Moldplus CATIA V5 Read	Fri Jan 31 2020	M	0	10

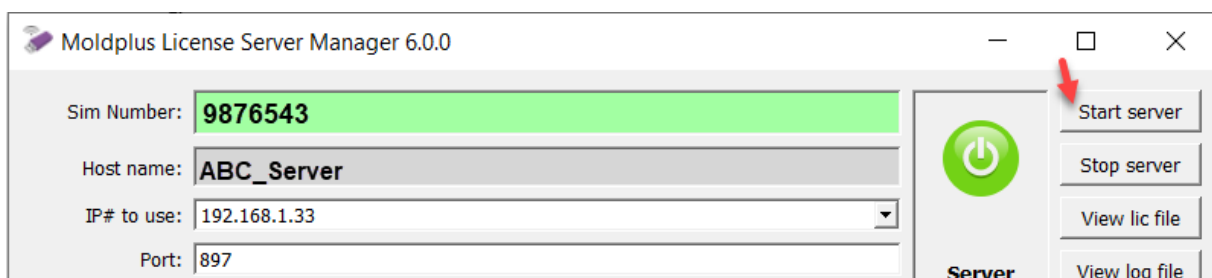
MOLDPLUS
Makes the difference

Close

If it does not launch right away, wait a bit. If it still does not launch, you can close the dialog and launch the Server Manager using the Admin mode.



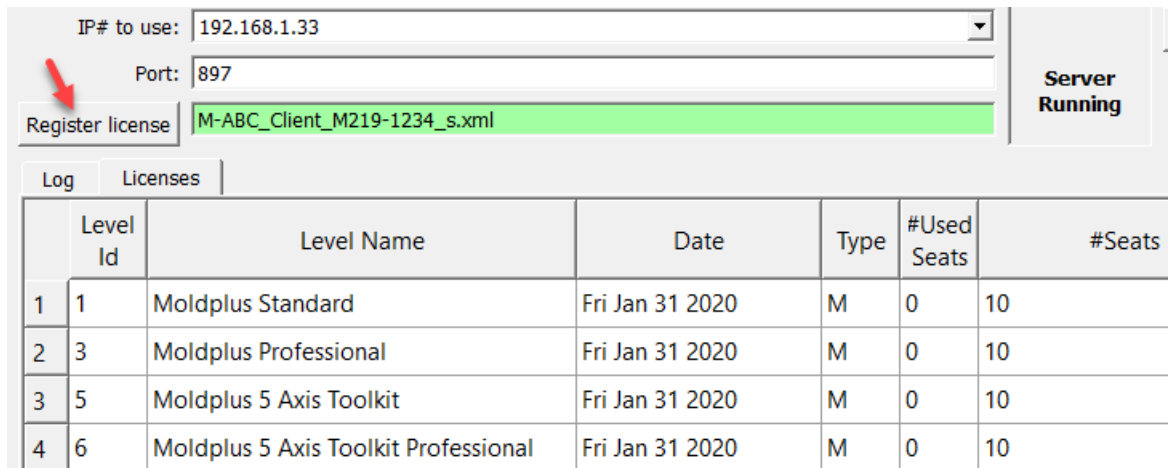
Once launched, you can click on the **Start server** to launch the Server.



Update XML License process

When maintenance is renewed, and you are provided a new license from your reseller, the installation process is simple.

1. Have the new XML license file handy on the Server computer.
2. Launch the Moldplus Server Manager if it is not running.
3. Click on the **Register license**.



IP# to use: 192.168.1.33

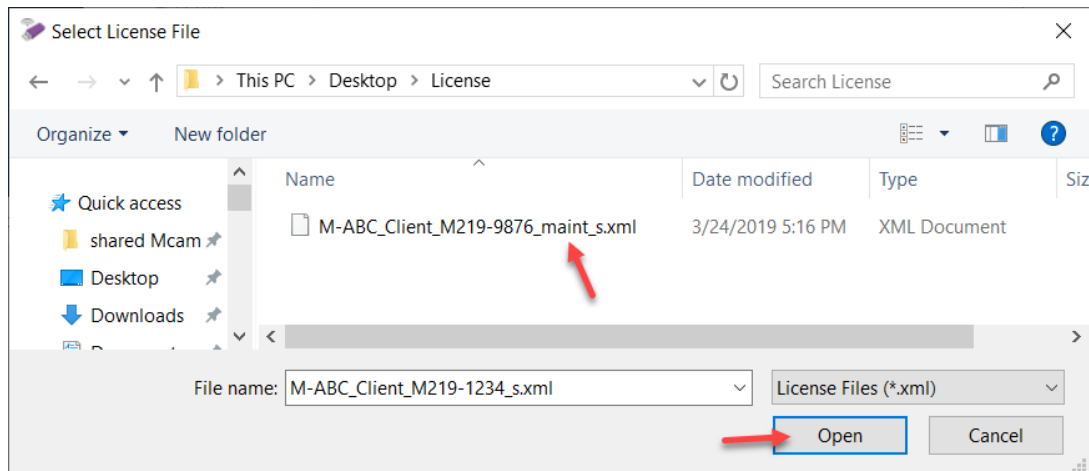
Port: 897

Register license M-ABC_Client_M219-1234_s.xml

Server Running

	Level Id	Level Name	Date	Type	#Used Seats	#Seats
1	1	Moldplus Standard	Fri Jan 31 2020	M	0	10
2	3	Moldplus Professional	Fri Jan 31 2020	M	0	10
3	5	Moldplus 5 Axis Toolkit	Fri Jan 31 2020	M	0	10
4	6	Moldplus 5 Axis Toolkit Professional	Fri Jan 31 2020	M	0	10

4. Locate the new XML license file.



5. As soon as you click on **Open**, the following happens:
 - a. The new license is registered, and the license server updated. You will see the maintenance date change and the new license name mentioned in the **Register license** field.

OLD

IP# to use: 192.168.1.33

Port: 897

Register license: M-ABC_Client_M219-1234_s.xml

Server Running

	Level Id	Level Name	Date	Type	#Used Seats	#Seats
1	1	Moldplus Standard	Fri Jan 31 2020	M	0	10
2	3	Moldplus Professional	Fri Jan 31 2020	M	0	10
3	5	Moldplus 5 Axis Toolkit	Fri Jan 31 2020	M	0	10
4	6	Moldplus 5 Axis Toolkit Professional	Fri Jan 31 2020	M	0	10

NEW: The new XML license file name is listed and the maintenance date changed to the new product maintenance date.

IP# to use: 192.168.1.33

Port: 897

Register license: M-ABC_Client_M219-9876_maint_s.xml

Server Running

	Level Id	Level Name	Date	Type	#Used Seats	#Seats
1	1	Moldplus Standard	Sun Jan 31 2021	M	0	10
2	3	Moldplus Professional	Sun Jan 31 2021	M	0	10
3	5	Moldplus 5 Axis Toolkit	Sun Jan 31 2021	M	0	10
4	6	Moldplus 5 Axis Toolkit Professional	Sun Jan 31 2021	M	0	10
5	7	Moldplus STL Utilities	Sun Jan 31 2021	M	0	10

- b. The old XML license is backed up to the **licensesBackup** folder.
 - c.

Organize New Open Select

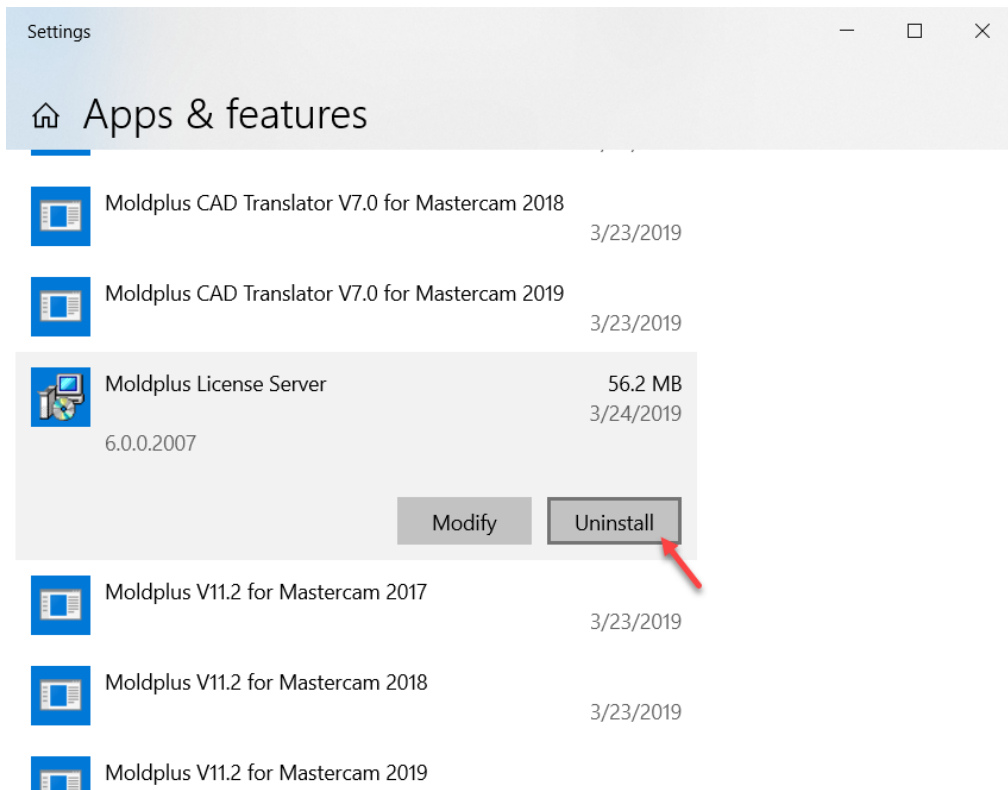
> Local Disk (C:) > Users > Public > Public Documents > Moldplus > Moldserv > licensesBackup

Name	Date modified	Type
M-ABC_Client_M219-1234_s.xml	3/10/2019 3:48 PM	XML Document

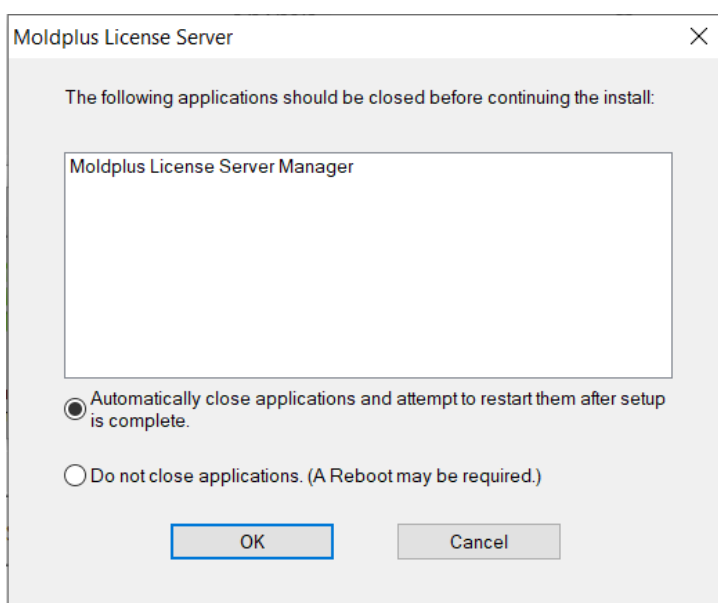
6. The Moldplus Server is up and running. This process can be done remotely without a physical presence at the Server

Uninstallation

To uninstall Moldplus Server, launch the Moldplus Server installation program from the Control Panel, “Add or Remove Programs”. If it detects that an installed version exists on the system, it will provide the option to perform an uninstall.



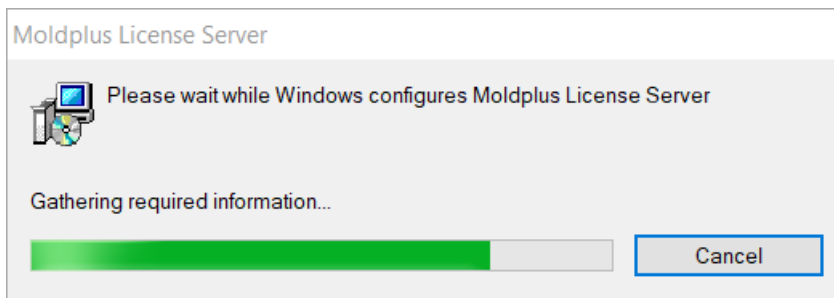
Warning: If the Moldplus Server Manager is still active, upon launching the installation program the following message will be presented:



Close

In the case of the above message, click on the button from Moldplus Server Manager to close the dialog OR choose the default option above to close it automatically and continue with the uninstallation process.

If Moldplus Service and Server were stopped, the following message is displayed upon launching the installation program.



The uninstallation process is complete.

NOTE: The XML license file, the LOG file and the INI files will not be removed upon uninstalling the product. They will still reside in the \Public Documents\Moldplus\Moldserv\ folder.

Client Computer License configuration

The latest versions of Moldplus and CATIA Translator will automatically detect the Moldplus Server and configure the IP and Port number.

Once the data is stored in the **C:\moldserv\moldserv.dat** file, you will be able to use Moldplus and the CATIA translator to the maximum licenses allowed.

NOTE: If this file does not exist on the system, create the c:\moldserv\ folder and then create the moldserv.dat file within that folder. That will ensure that the Moldplus Server is identified.

This is an example of the licenses encountered for the Moldplus product that can be checked out.

[illegible]

The Moldplus CAD Translator will show the corresponding licensed products.

Moldplus License Manager

Copyright © 1997-2019 Moldplus S.A.

7.0.0

Check Updates

Sim number9876543

Sim typeNETHASP NETWORK

User typeIndustry

Licenses

Functions

License	Maint. Date	Day Left	Seat used	State
11: Moldplus CATIA V5 Read	1/31/2020	-	0/10	Ok
12: Moldplus CATIA V5 Read Solids	1/31/2020	-	0/10	Ok
13: Moldplus CATIA V4 Read	1/31/2020	-	0/10	Ok
14: Moldplus CATIA V4 Write	1/31/2020	-	0/10	Ok
15: Moldplus CATIA V4 Solids	1/31/2020	-	0/10	Ok
16: Moldplus CATIA V5/V6 MBD	1/31/2020	-	0/10	Ok
17: Moldplus CATIA V5 CGR Import	1/31/2020	-	0/10	Ok
18: Moldplus CATIA V6 Import	1/31/2020	-	0/10	Ok
24: Moldplus NX/UG Import with M...	1/31/2020	-	0/10	Ok
25: Moldplus JT Import	1/31/2020	-	0/10	Ok
28: Moldplus ProE/Croce Import wit...	1/31/2020	-	0/10	Ok
29: Moldplus Step Read	-	-	-	No License

Local XML license file (Only demo codes allowed in NetHasp)

Status

File

Register

Server configuration

StatusConnected to Moldplus Server.

Refresh

Host NameABC_Server

Host IP192.168.1.33

Host Port897

Set Server Parameters

Close

Help

Page 28 of 37

Network License Monitor

The following information will be presented only when you launch from the Programs folder.

The following details will explain all the options of the Moldplus Server 6.0 dialog.

1.1 Moldplus License Server Manager

Moldplus License Server Manager 6.0.0

Sim Number: **9876543**

Host name: **ABC_Server**

IP# to use: **192.168.1.33**

Port: **897**

Register license: **M-ABC_Client_M219-1234_s.xml**

View lic file

View log file

Help

Server Running

Log Licenses

	Level Id	Level Name	Date	Type	#Used Seats	#Seats
1	1	Moldplus Standard	Fri Jan 31 2020	M	0	10
2	3	Moldplus Professional	Fri Jan 31 2020	M	0	10
3	5	Moldplus 5 Axis Toolkit	Fri Jan 31 2020	M	0	10
4	6	Moldplus 5 Axis Toolkit Professional	Fri Jan 31 2020	M	0	10
5	7	Moldplus STL Utilities	Fri Jan 31 2020	M	0	10
6	8	Moldplus Plate Fixture Design	Fri Jan 31 2020	M	0	10
7	11	Moldplus CATIA V5 Read	Fri Jan 31 2020	M	0	10

MOLDPLUS
Makes the difference

Close

Serial Number:

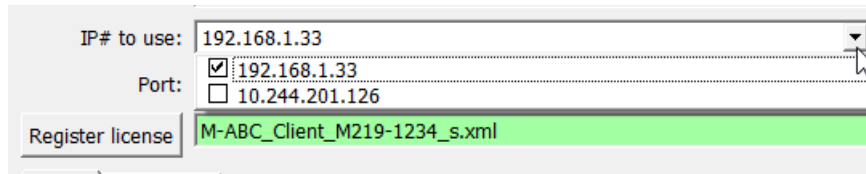
The Mastercam Nethasp SIM number OR WIBU NETWORK SIM number is displayed as the Serial Number. If a serial number of 0 is displayed, refer to the [SIM not found section](#) of this document to ensure that Moldplus Server can access the Mastercam SIM.

Host Name:

The system network server name is displayed here. The end user can use this name as the reference to search for the Server using the work stations. As default, server name alone is sufficient to configure the workstations with all new versions of Moldplus products.

IP# to use:

The Moldplus Server functions properly by using one or multiple **IP address** (pre-assigned or user-configured). *If there is more than 1 IP address on the system, you will be allowed to check the relevant IP addresses to use with Moldplus Server.* The IP address is the same as the one used by the Hasp License Manager. The IP addresses that are checked are displayed in the field.



Hint: Multiple IP Addresses are useful when you use an IP address to access the Server from the office and a different IP address from a remote location. By having both IP addresses checked, you can access the Server from either location.

Port:

The communication of the license is affected by the UDP ports, which are defined by default for each machine (server: 897). You can modify the UDP ports if there are conflicts with another application.

Register license

Allows you to select the Moldplus Server XML license file to register the licenses. **You have to use this button to properly register the XML license file.** This file is provided by your Mastercam reseller to configure all your Moldplus product licenses.

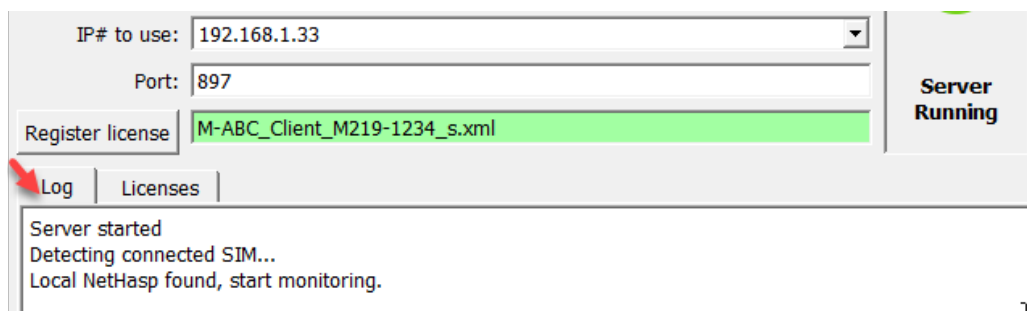
Note: Updating to a new license will automatically backup the old license and register the new license. No need to stop the Server to do this!

WARNING:

1. **Editing any of the XML file's contents OR changing the file name prefix from "M-" will result in an invalid license file!**

Log Display:

Displays the Server event log. This file (ManagerLog.txt) is stored in the same folder as the license file.



T

Licenses Display:

The licenses tab displays the following information whenever the Server is running and active.

	Level Id	Level Name	Date	Type	#Used Seats	#Seats
1	1	Moldplus Standard	Fri Jan 31 2020	M	0	10
2	3	Moldplus Professional	Fri Jan 31 2020	M	0	10
3	5	Moldplus 5 Axis Toolkit	Fri Jan 31 2020	M	0	10
4	6	Moldplus 5 Axis Toolkit Professional	Fri Jan 31 2020	M	0	10
5	7	Moldplus STL Utilities	Fri Jan 31 2020	M	0	10
6	8	Moldplus Plate Fixture Design	Fri Jan 31 2020	M	0	10
7	11	Moldplus CATIA V5 Read	Fri Jan 31 2020	M	0	10

Number Count

A number count of the different Moldplus products licensed.

Level Id

Level Id

Moldplus product reference ID number.

Level Name

Level Name

The name of any Moldplus product that is licensed and controlled using the Moldplus Server.

Date Date

This date indicates the maintenance expiration date for any given Moldplus product. **As long as the maintenance date has not expired, the client can always use the latest releases and versions provided by Moldplus SA.** If the date has expired, only functionality prior to the Maintenance expiry date will be active within a 12 month period. Moldplus temporary licenses are also displayed in the same field.

Type Type

Type of code, either **Maintenance**, **Temporary** or **Educational**.

#Used Seats #Used Seats

The number of licenses of the listed products that are **actively** being used by a client at any given time over the network.

#Seats #Seats

The total number of **registered** licenses purchased by the client for the listed product.

Start server

(ONLY AVAILABLE WHEN LAUNCHED WITH ADMIN RIGHTS)

This button installs the Moldplus Service and launches the Moldplus Server licenses for immediate use of the product.

Stop server

(ONLY AVAILABLE WHEN LAUNCHED WITH ADMIN RIGHTS)

This button will stop the Moldplus Server AND remove the Moldplus Windows Service.

View lic file

This button allows you to view the provided XML license using the default Internet browser.

View log file

View the Log history for the Moldplus Server using Windows notepad.

Help

Open this PDF help document.

Close

This button will close the Moldplus Server Manager dialog. **Closing this dialog will not stop the licenses from running if they are active.**

1.2 Moldplus Licenses Operation

Each time a Moldplus license is open on one machine it is counted as a floating license being used.

Upon correctly leaving a Moldplus Level, a license for this level is immediately and automatically released.

Normally, when the number of Moldplus users arrives at the maximum number permitted by the license all new requests to use Moldplus will be refused until one person stops using Moldplus.

If the user is required to leave Moldplus due to a fatal error the license will be released after a minimum of 30 seconds.

1.3 Moldplus Temporary Licenses

Temporary licenses to try Moldplus products are normally provided for a period of 30 days.

Trouble-shooting

The following section refers to the installation issues and how to verify the proper settings and configuration.

For Windows Server editions, please check the [configuration](#) section above.

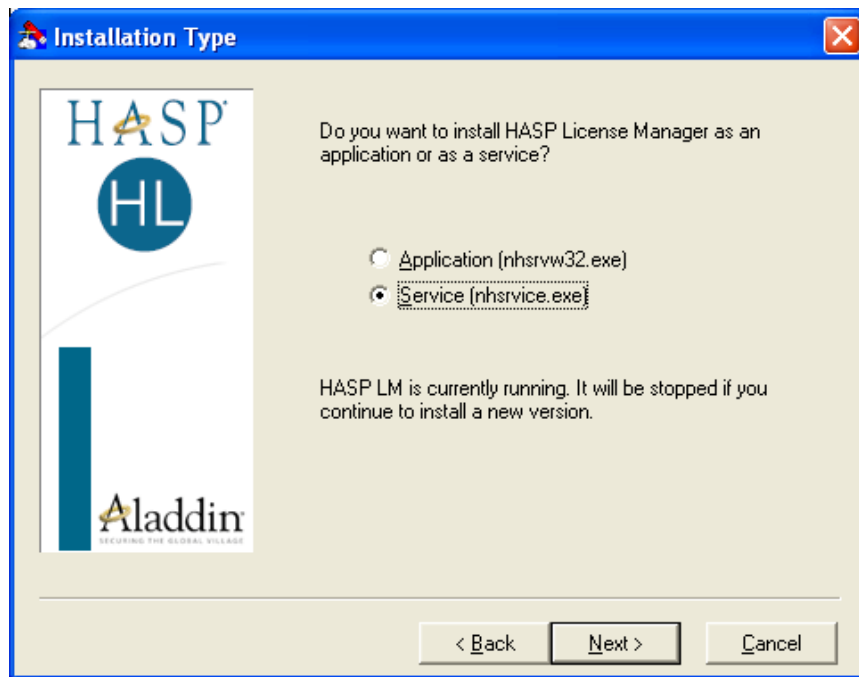
The basic checks are: Firewall settings and Antivirus software to ensure that the Moldplus Server properly launches.

2.1 *NetHasp License Manager not installed*

Solution:

Run the LMSETUP.EXE file, found in the **\Program Files\Moldplus\Moldplus License Server\ThirdPartySoftware** folder. This will launch the NetHasp License Manager installation, install the necessary files and configure the NetHasp License Manager to run on your system.

To set it as a **Service**, ensure that you select the following option while performing this installation:




This is critical to launch the Moldplus Server. If this is not running on your system, Moldplus Server will give errors.

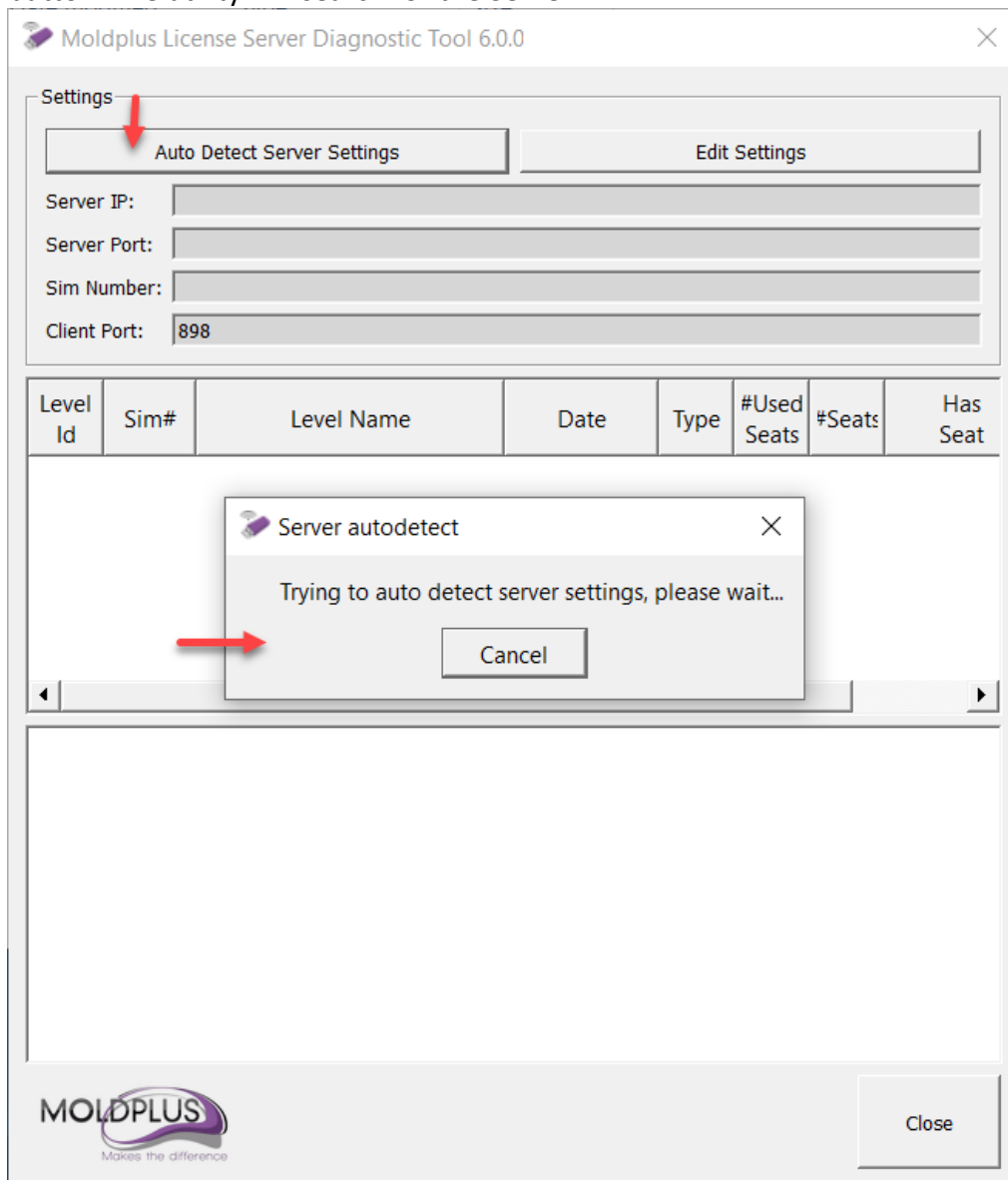
2.3.3 Moldplus Server Diagnostic Tool

In the Moldplus Server Manager folder, there is a diagnostic tool that can be copied and placed in the workstation to see if the Server is being properly accessed.

Copy the following files to the client workstation:

1. **MoldservDiagTool.exe**
2. **Qt5Core.dll**
3. **Qt5Gui.dll** and
4. **Qt5Network.dll**

Launch the  **Moldplus Server Diagnostic Tool** utility from the “Moldplus License Server” group. The following dialog is presented. Click on the **Auto Detect Server Settings** button. The utility will search for the Server.



When the Server is identified, all the products available are listed as shown. You can click on the **Register** button to see if the workstation can check out a license. Clicking on **Unregister** will release the license.

Moldplus License Server Diagnostic Tool 6.0.0

Settings

Auto Detect Server Settings Edit Settings

Server IP: 192.168.1.33

Server Port: 897

Sim Number: 31

Client Port: 898

	Level Id	Sim#	Level Name	Date	Type	#Used Seats	#Seats
1	1	31	Moldplus Standard	Fri Jan 31 20...	M	0	10
2	3	31	Moldplus Professional	Fri Jan 31 20...	M	0	10
3	5	31	Moldplus 5 Axis Toolkit	Fri Jan 31 20...	M	0	10
4	6	31	Moldplus 5 Axis Toolkit Pro...	Fri Jan 31 20...	M	0	10
5	7	31	Moldplus STL Utilities	Fri Jan 31 20...	M	0	10
6	8	31	Moldplus Plate Fixture Desi...	Fri Jan 31 20...	M	0	10
7	11	31	Moldplus CATIA V5 Read	Fri Jan 31 20...	M	0	10

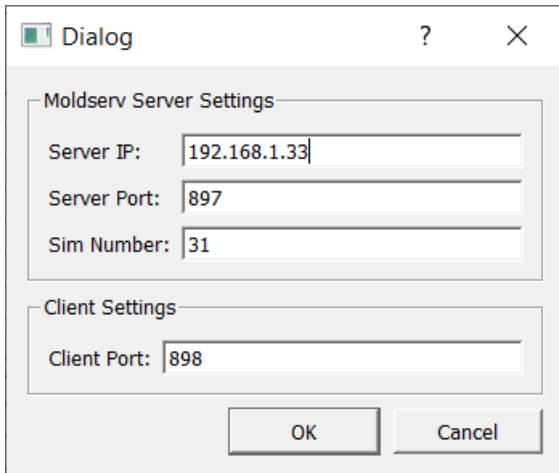
1	Register	Unregister	1	Moldplus Standard
2	Register	Unregister	3	Moldplus Professional
3	Register	Unregister	5	Moldplus 5 Axis Tool...
4	Register	Unregister	6	Moldplus 5 Axis Tool...
5	Register	Unregister	7	Moldplus STL Utilities
6	Register	Unregister	8	Moldplus Plate Fixtu...
7	Register	Unregister	11	Moldplus CATIA V5 ...
8	Register	Unregister	12	Moldplus CATIA V5 ...
9	Register	Unregister	13	Moldplus CATIA V4 ...
10	Register	Unregister	14	Moldplus CATIA V4 ...
11	Register	Unregister	15	Moldplus CATIA V4 ...

MOLDPLUS
Makes the difference

Close

This is a quick verification tool to see if the Server is properly identified and the licenses can be checked out.

If the Server is not identified automatically, you can click on the **Edit Settings** button. The following dialog is presented:

A screenshot of a Windows-style dialog box titled "Dialog". It contains two sections: "Moldserv Server Settings" and "Client Settings". The "Moldserv Server Settings" section has three input fields: "Server IP:" with the value "192.168.1.33", "Server Port:" with the value "897", and "Sim Number:" with the value "31". The "Client Settings" section has one input field: "Client Port:" with the value "898". At the bottom of the dialog are two buttons: "OK" and "Cancel".

Enter the IP address here and port number if needed to search for the server. Once the Server is identified the dialog displays all the product licenses available as shown in the previous dialog.

Conclusion

We hope you found this document useful to help configure Moldplus Server 6.0 seamlessly and with minimal effort.

Questions or feedback, please email support@moldplus.com

Moldplus Server is developed with open source software. Licenses for all open source software components are available in the file "*Open Source Software Licenses.docx*" which is provided with this installation.

Thank you

Moldplus SA
Revision date: June 30, 2019